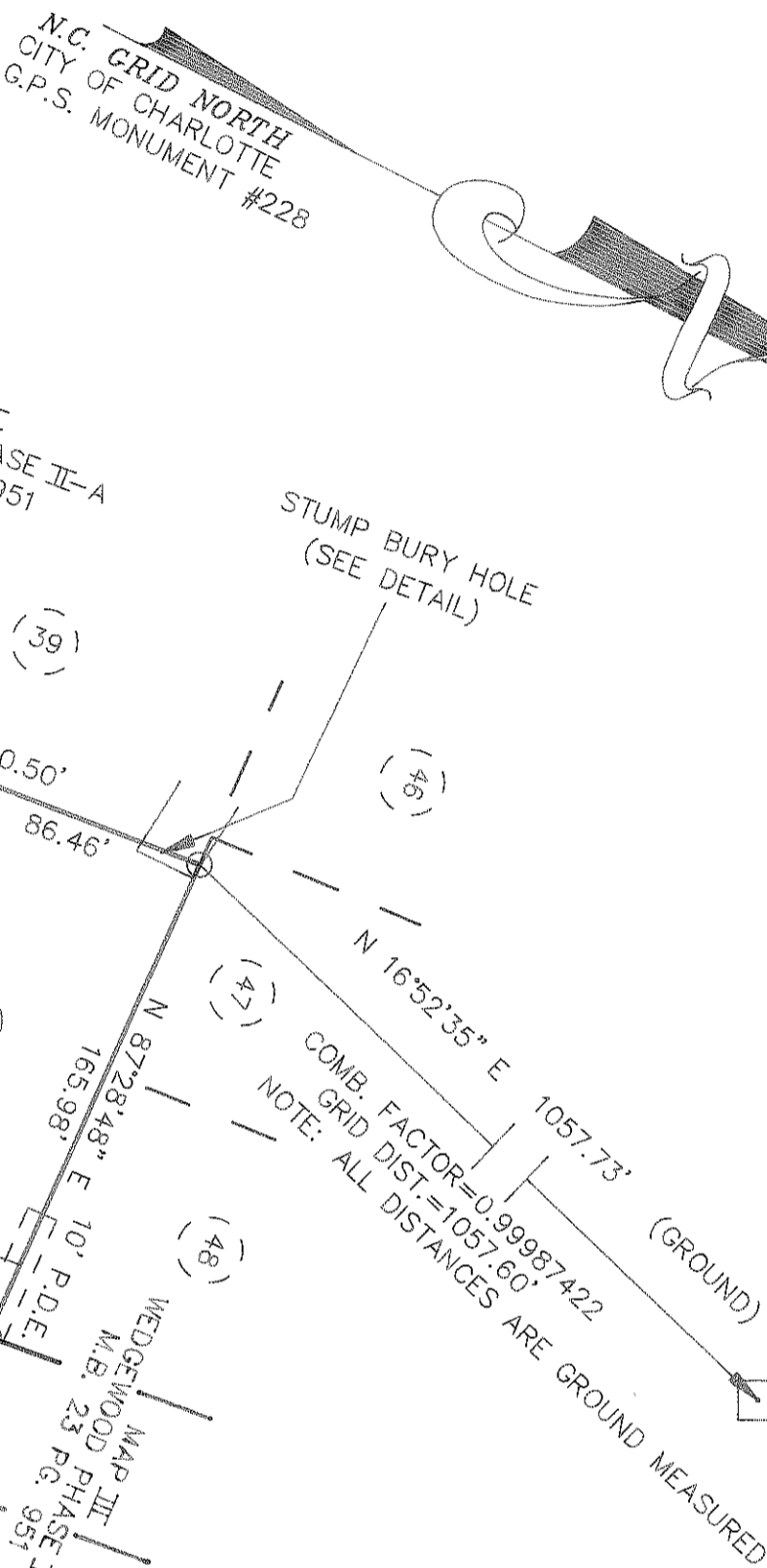
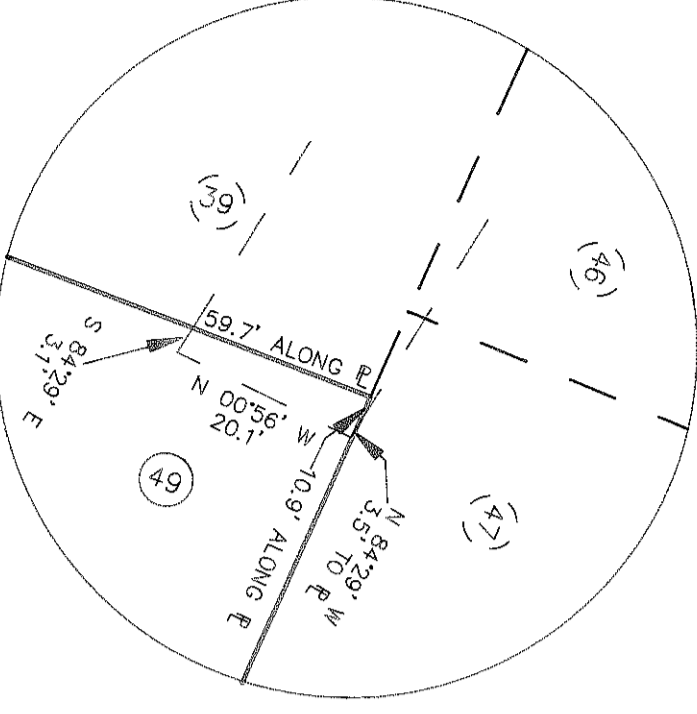


91017124

CURVE	RADIUS	LENGTH	CHORD	BEARING
C1	395.00'	42.64'	42.62'	S 03°43.58' E
C2	395.00'	80.71'	80.57'	S 05°12.48' W
C3	395.00'	184.32'	182.65'	S 24°26.06' W
C4	345.00'	97.01'	96.69'	N 29°44.53' E
C5	345.00'	108.36'	107.93'	N 12°41.37' E
C6	345.00'	63.34'	63.26'	N 01°33.56' W



DEDICATION OF COMMON OPEN SPACE

FIRST COLONY GROUP, LTD., IN RECORDING THIS PLAT AS A PORTION OF WEDGEWOOD (PHASE II) HAS DESIGNATED CERTAIN PARTS AS "COMMON OPEN SPACE" FOR THE USE BY THE HOMEOWNERS OR TENANTS OF WEDGEWOOD, NOT FOR USE BY THE GENERAL PUBLIC BUT FOR PARKING, RECREATIONAL, AND OTHER RELATED ACTIVITIES AS MORE FULLY PROVIDED FOR THE DECLARATION OF COVENANTS, CONDITIONS, AND RESTRICTIONS APPLICABLE TO WEDGEWOOD WHICH DECLARATIONS RECORDED IN THE MECKLENBURG COUNTY REGISTER OF DEEDS IN BOOK 6247 PAGE 0250 ON 4/4/90 AND WHICH SAID DECLARATION IS HEREBY MADE A PART OF THIS PLAT AND INCORPORATED HEREIN.

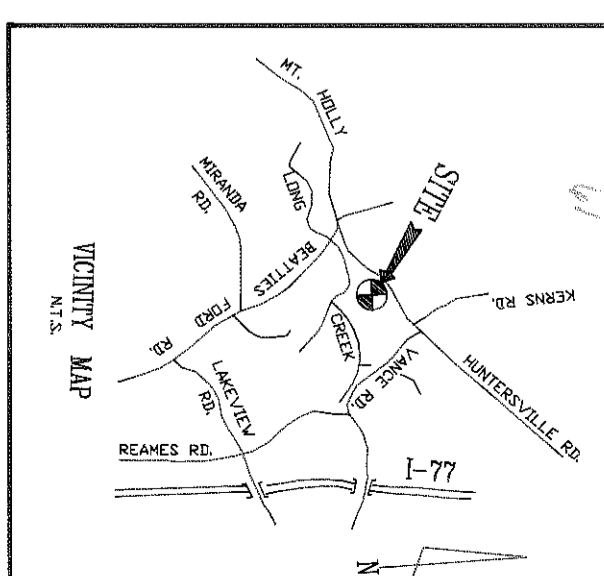
THE COMMON AREA ASSOCIATED WITH THIS MAP IS RECORDED IN MAP BOOK 23 PAGE 950 ON 9/4/90.

CITY OF CHARLOTTE
G.P.S. MONUMENT #228
GRID COORDINATES: X=1,441,085.79
Y=588,943.60

DEPARTMENT OF TRANSPORTATION
DIVISION OF HIGHWAYS
PROPOSED SUBDIVISION ROAD
CONSTRUCTION STANDARDS CERTIFICATION

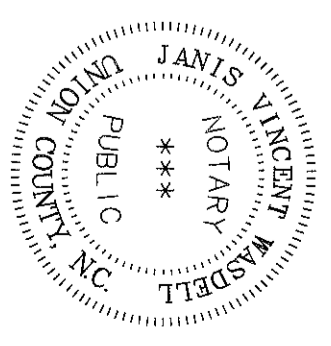
APPROVED _____
DIVISION ENGINEER

DATE _____



North Carolina, Union County
I, a Notary Public of the County and State aforesaid, certify that Edward L. Killough, a registered land surveyor, personally appeared before me this day and acknowledged the execution of the foregoing instrument. Witness my hand and official stamp or seal, this 31st day of August, 1990.

Tavis Vincent Woodard
Notary Public



My commission expires May 21, 1992.

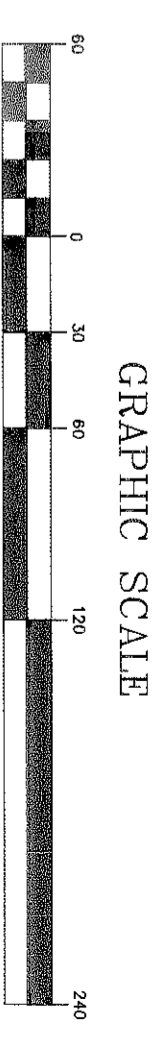
APPROVED IN ACCORDANCE WITH THE ENGINEERING REQUIREMENTS OF THE SUBDIVISION ORDINANCE OF MECKLENBURG COUNTY, NORTH CAROLINA.
MECKLENBURG COUNTY ENGINEERING DEPARTMENT

My
(COUNTY ENGINEER)
DATE 8/26/91

- NOTES:**
- IRON PINS SET AT ALL CORNERS UNLESS OTHERWISE NOTED
 - FRONT IRONS SET BEHIND CURB ON EXTENSION OF LOT LINES
 - P.D.E. = PUBLIC DRAINAGE EASEMENT
 - R/W = RIGHT OF WAY
 - ZONING = R 9 PUD (DEVELOPED UNDER CLUSTER CRITERIA)
 - MINIMUM LOT AREA = 9000 SQUARE FEET WITH A MINIMUM 60' WIDTH AT THE FRONT SETBACK LINE
 - SIDE YARDS ARE 6' AND 8' WITH MINIMUM 25' REAR YARDS ON INTERIOR LOTS AND 40' ON EXTERIOR LOTS
 - TOTAL AREA = 2.73 ACRES
 - STREET R/W AREA = 0.46 ACRES
 - AREA IN LOTS = 2.27 ACRES

MAP V
OF
WEDGEWOOD - PHASE II-A
FOR
FIRST COLONY GROUP, LTD.-Owner
LONG CREEK TOWNSHIP, MECKLENBURG COUNTY, NORTH CAROLINA

AUGUST 31, 1990

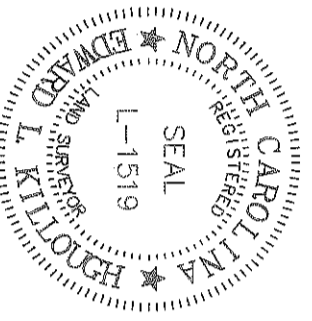


SURVEYED BY
EDWARD L. KILLOUGH, N.C.R.L.S. L-1519
BOX 369
INDIAN TRAIL, N.C. 28079
TELEPHONE NO. (704) 821-7111

State of North Carolina, County of Mecklenburg
I, Anne A. Powers, Register of Deeds for aforesaid County and State, hereby certify that the foregoing is a true copy of Map as the same is found in the Office of the Register of Deeds for Mecklenburg County, North Carolina, in Book _____ Page _____.

Witness my hand and official seal, this the _____ day of _____ 19____.

Anne A. Powers, Register of Deeds
By: _____ Deputy



APPROVED IN ACCORDANCE WITH THE PROVISIONS OF THE SUB-DIVISION ORDINANCE OF MECKLENBURG COUNTY, NORTH CAROLINA
CHARLOTTE - MECKLENBURG PLANNING COMMISSION

SECRETARY _____
DATE 3/1/91



L-1519
Registered Land Surveyor

Reg. No.