

APPROVED IN ACCORDANCE WITH THE PROVISIONS OF THE SUB-DIVISION ORDINANCE OF MECKLENBURG COUNTY, NORTH CAROLINA
 MECKLENBURG COUNTY PLANNING COMMISSION
 PLANNING COMMISSION STAFF
 DATE 5/4/94

APPROVED IN ACCORDANCE WITH THE ENGINEERING REQUIREMENTS OF THE SUBDIVISION ORDINANCE OF MECKLENBURG COUNTY, NORTH CAROLINA.
 MECKLENBURG COUNTY ENGINEERING DEPARTMENT
 COUNTY ENGINEER
 DATE 5/4/94

CURVE	RADIUS	LENGTH	CHORD	BEARING
C1	440.36	74.10	74.01	S 87°43'14" E
C2	440.36	74.10	74.01	N 92°20'59" E
C3	440.36	74.10	74.01	N 92°20'59" E
C4	440.36	74.10	74.01	N 92°20'59" E
C5	440.36	74.10	74.01	N 92°20'59" E
C6	440.36	74.10	74.01	N 92°20'59" E
C7	440.36	74.10	74.01	N 92°20'59" E
C8	440.36	74.10	74.01	N 92°20'59" E
C9	440.36	74.10	74.01	N 92°20'59" E
C10	440.36	74.10	74.01	N 92°20'59" E
C11	440.36	74.10	74.01	N 92°20'59" E
C12	440.36	74.10	74.01	N 92°20'59" E
C13	440.36	74.10	74.01	N 92°20'59" E
C14	440.36	74.10	74.01	N 92°20'59" E
C15	440.36	74.10	74.01	N 92°20'59" E
C16	440.36	74.10	74.01	N 92°20'59" E
C17	440.36	74.10	74.01	N 92°20'59" E
C18	440.36	74.10	74.01	N 92°20'59" E
C19	440.36	74.10	74.01	N 92°20'59" E

LINE	DIRECTION	DISTANCE
L1	N 66°14'34" E	6.25
L2	S 24°14'13" E	20.01
L3	S 21°41'51" E	25.00
L4	S 73°47'04" W	6.11
L5	N 16°12'56" W	29.00
L6	N 50°56'17" W	23.37

I, EDWARD L. KILLOUGH, certify that this plat was drawn under my supervision from an actual survey made under my supervision (Deed recorded in Deed Book 6183 Page 634), that the boundaries not surveyed are clearly indicated as drawn from information found in the respective Deed and Map Book references as shown, that I am a duly Licensed Professional Engineer, State of North Carolina, License No. 47-1994, and that I have signed and sealed this plat on the 4th day of January, A.D., 1994.
 Edward L. Killough
 Registered Surveyor
 Reg. No. L-1519



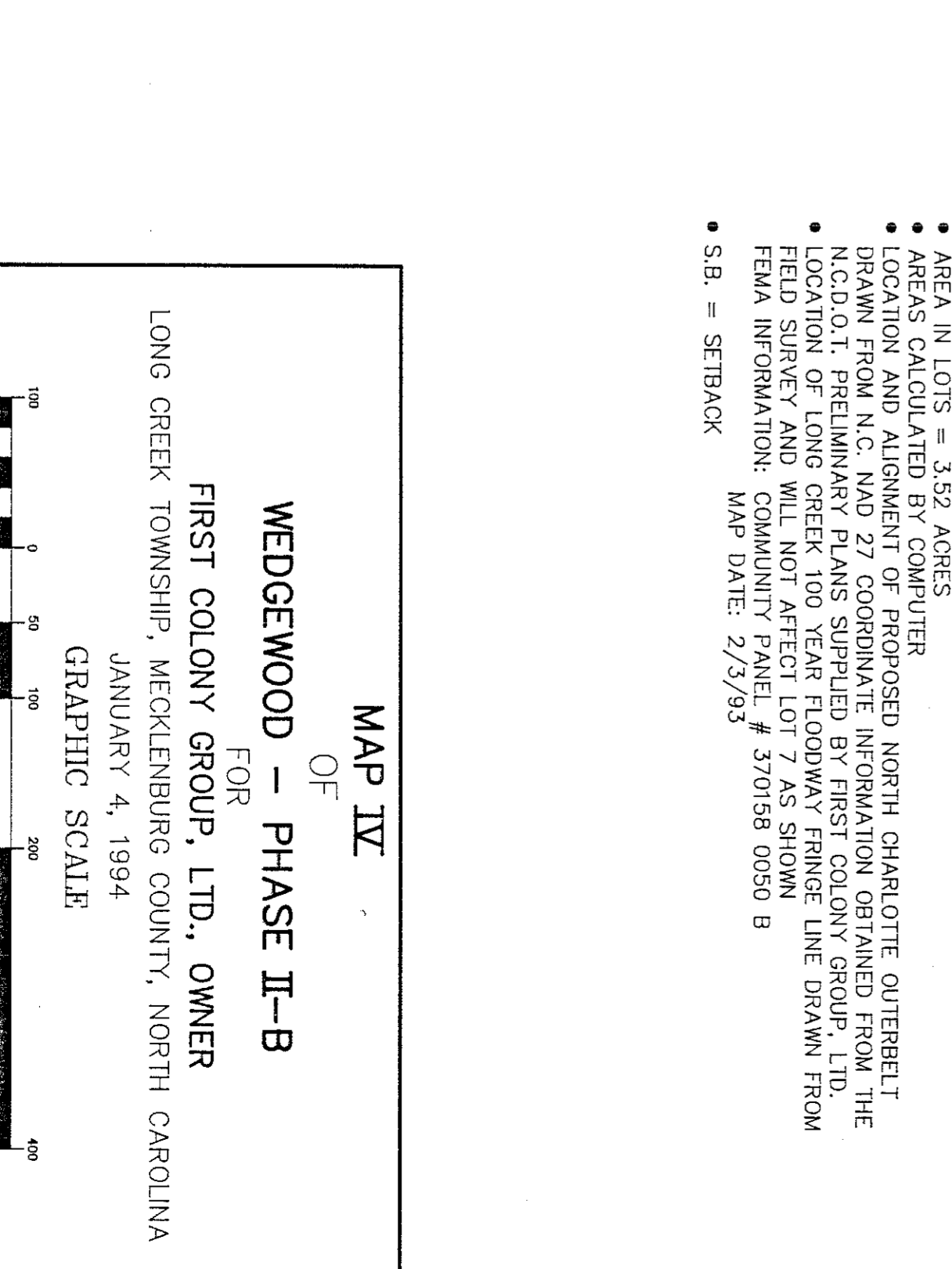
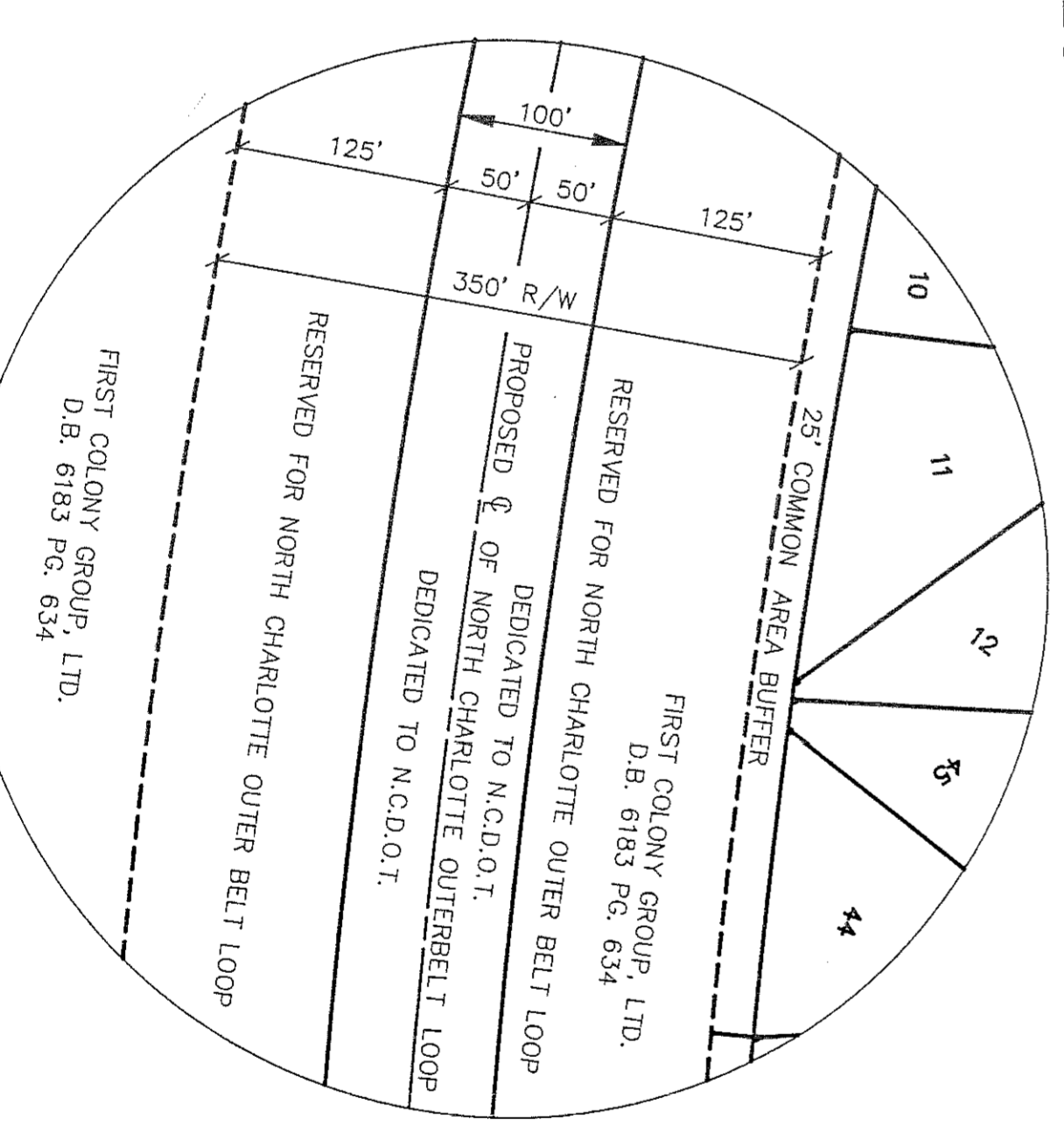
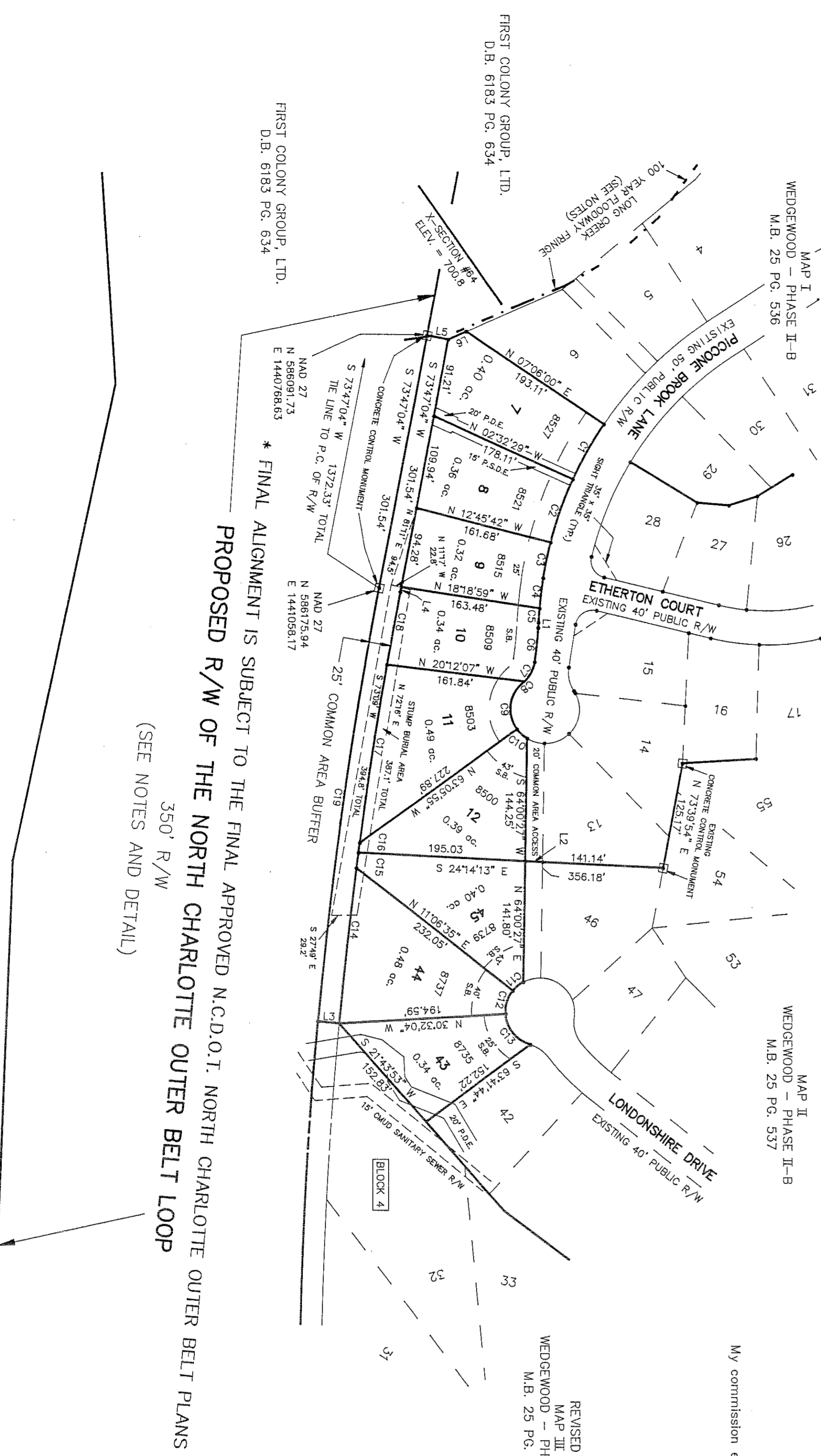
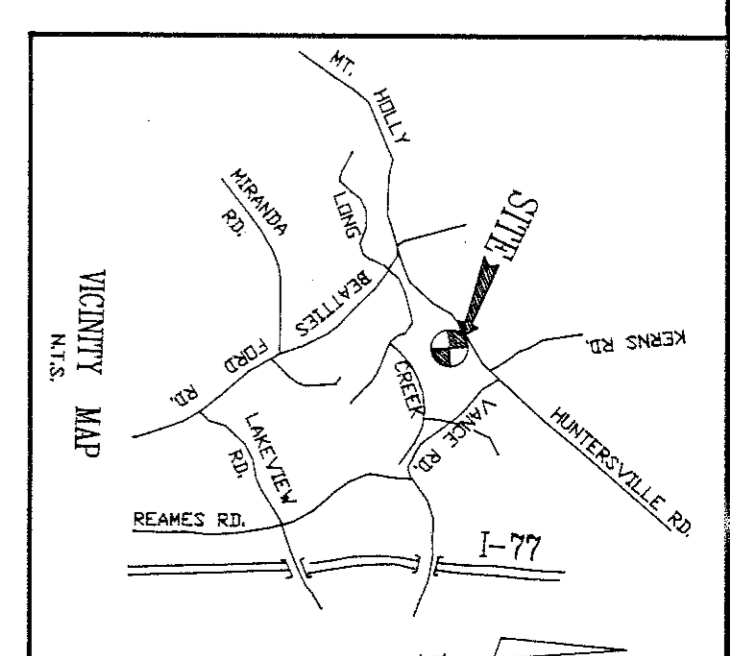
North Carolina, Union County
 I, a Notary Public of the County and State aforesaid, certify that Edward L. Killough, a registered land surveyor, personally appeared before me this day and acknowledged the execution of the foregoing instrument. Witness my hand and official stamp or seal, this 4th day of January, 1994.
 Notary Public

My commission expires May 12, 1996.



State of North Carolina, County of Mecklenburg
 I, Judith A. Gibson, Register of Deeds for Mecklenburg County and State, hereby certify that the foregoing is a true copy of Map as the same is found in the Office of the Register of Deeds for Mecklenburg County, North Carolina, in Book _____ Page _____
 Witness my hand and official seal, this the _____ day of _____, 19____.
 Judith A. Gibson, Register of Deeds
 Deputy

FILED FOR REGISTRATION
 94 MAR -5 AM 10:04
 REGISTER OF DEEDS
 MECKLENBURG COUNTY, N.C.
 RECORDED 7/2/93



WEDGEWOOD - PHASE II-B
 OF
 FIRST COLONY GROUP, LTD., OWNER
 LONG CREEK TOWNSHIP, MECKLENBURG COUNTY, NORTH CAROLINA
 JANUARY 4, 1994
 GRAPHIC SCALE
 SURVEYED BY: EDWARD L. KILLOUGH, N.C.R.L.S. L-1519
 204 GRANBLE ROAD
 INDIAN TRAIL, NORTH CAROLINA 28079
 TEL. (704) 821-7111

PROPOSED NORTH CHARLOTTE OUTERBELT LOOP
 R/W DEDICATION DETAIL

FIRST COLONY GROUP, LTD.
 D.B. 6183 PG. 634

FIRST COLONY GROUP, LTD.
 D.B. 6183 PG. 634

NOTES:
 ● IRON PINS SET AT ALL CORNERS UNLESS OTHERWISE NOTED
 ● FRONT IRONS SET BEHIND CURB ON EXTENSION OF LOT LINES
 ● P.S.D.E. = PERMANENT STORM DRAINAGE EASEMENT (UNDERGROUND CONCRETE PIPE)
 ● P.D.E. = PUBLIC STORM DRAINAGE EASEMENT (OPEN CHANNEL)
 ● C.A.U. = CHARLOTTE-UNION COUNTY MECKLENBURG UTILITY DEPARTMENT SANITARY SEWER
 ● ZONING = R 9 PLUD (DEVELOPED UNDER CLUSTER CRITERIA)
 ● MINIMUM LOT AREA = 9000 SQUARE FEET WITH A MINIMUM 60' WIDTH AT THE FRONT SETBACK LINE
 ● SIDE YARDS ARE 6' AND 8' WITH MINIMUM 25' REAR YARDS ON INTERIOR LOTS AND 40' ON EXTERIOR LOTS
 ● TOTAL AREA = 3.99 ACRES
 ● COMMON AREA = 0.47 ACRES
 ● AREA IN LOTS = 3.52 ACRES
 ● LOCATION AND ALIGNMENT OF PROPOSED NORTH CHARLOTTE OUTERBELT LOOP AND ADJACENT ALTERNATE INFORMATION OBTAINED FROM THE N.C.D.O.T. PRELIMINARY PLANS SUPPLIED BY FIRST COLONY GROUP, LTD.
 ● LOCATION OF LONG CREEK 100 YEAR FLOODWAY FRINGE LINE DRAWN FROM FIELD SURVEY AND WILL NOT AFFECT LOT 7 AS SHOWN
 ● FEMA INFORMATION: COMMUNITY PANEL # 370158 0050 B
 ● MAP DATE: 2/3/93
 ● S.B. = SETBACK