

CHANCE	FRACUS	LENGTH	CHORD	BEARING
C1	525.00'	34.28'	34.28'	S 47°13'26" E
C2	275.00'	38.06'	38.06'	S 30°13'14" E
C3	275.00'	38.06'	38.06'	N 61°58'27" E
C4	325.00'	55.51'	55.51'	N 47°10'52" W
C5	325.00'	55.51'	55.51'	N 39°10'52" W
C6	180.00'	30.81'	30.81'	S 80°13'20" E
C7	180.00'	30.81'	30.81'	N 41°15'47" E
C8	130.00'	28.02'	28.02'	N 26°33'16" E
C9	130.00'	28.02'	28.02'	N 60°20'09" E
C10	58.00'	16.72'	16.72'	S 68°33'26" E
C11	40.00'	16.72'	16.67'	N 11°37'21" W
C12	40.00'	16.72'	16.67'	N 18°00'55" W
C13	40.00'	16.72'	16.67'	N 11°37'21" W
C14	40.00'	16.72'	16.67'	N 18°00'55" W
C15	40.00'	16.72'	16.67'	N 11°37'21" W
C16	40.00'	16.72'	16.67'	N 18°00'55" W
C17	40.00'	16.72'	16.67'	N 11°37'21" W
C18	40.00'	16.72'	16.67'	N 18°00'55" W
C19	40.00'	16.72'	16.67'	N 11°37'21" W
C20	40.00'	16.72'	16.67'	N 18°00'55" W
C21	40.00'	16.72'	16.67'	N 11°37'21" W
C22	40.00'	16.72'	16.67'	N 18°00'55" W
C23	40.00'	16.72'	16.67'	N 11°37'21" W
C24	40.00'	16.72'	16.67'	N 18°00'55" W
C25	40.00'	16.72'	16.67'	N 11°37'21" W
C26	40.00'	16.72'	16.67'	N 18°00'55" W
C27	40.00'	16.72'	16.67'	N 11°37'21" W
C28	40.00'	16.72'	16.67'	N 18°00'55" W
C29	40.00'	16.72'	16.67'	N 11°37'21" W
C30	40.00'	16.72'	16.67'	N 18°00'55" W
C31	40.00'	16.72'	16.67'	N 11°37'21" W
C32	40.00'	16.72'	16.67'	N 18°00'55" W

LINE	DIRECTION	DISTANCE
L1	S 231°21'11" E	18.834
L2	S 61°58'27" E	37.668
L3	S 18°44'55" W	53.544
L4	N 88°24'44" E	79.289
L5	N 19°39'14" W	16.800
L6	N 26°33'16" E	38.233
L7	N 60°20'09" E	38.233
L8	N 41°15'47" E	28.020
L9	N 26°33'16" E	28.020
L10	N 41°15'47" E	28.020
L11	N 60°20'09" E	28.020
L12	N 26°33'16" E	28.020
L13	N 41°15'47" E	28.020
L14	N 60°20'09" E	28.020
L15	N 26°33'16" E	28.020
L16	N 41°15'47" E	28.020
L17	N 60°20'09" E	28.020
L18	N 26°33'16" E	28.020
L19	N 41°15'47" E	28.020
L20	N 60°20'09" E	28.020
L21	N 26°33'16" E	28.020
L22	N 41°15'47" E	28.020
L23	N 60°20'09" E	28.020
L24	N 26°33'16" E	28.020
L25	N 41°15'47" E	28.020
L26	N 60°20'09" E	28.020
L27	N 26°33'16" E	28.020
L28	N 41°15'47" E	28.020
L29	N 60°20'09" E	28.020
L30	N 26°33'16" E	28.020
L31	N 41°15'47" E	28.020
L32	N 60°20'09" E	28.020
L33	N 26°33'16" E	28.020
L34	N 41°15'47" E	28.020
L35	N 60°20'09" E	28.020
L36	N 26°33'16" E	28.020
L37	N 41°15'47" E	28.020
L38	N 60°20'09" E	28.020
L39	N 26°33'16" E	28.020
L40	N 41°15'47" E	28.020
L41	N 60°20'09" E	28.020
L42	N 26°33'16" E	28.020
L43	N 41°15'47" E	28.020
L44	N 60°20'09" E	28.020
L45	N 26°33'16" E	28.020
L46	N 41°15'47" E	28.020
L47	N 60°20'09" E	28.020
L48	N 26°33'16" E	28.020
L49	N 41°15'47" E	28.020
L50	N 60°20'09" E	28.020

CERTIFIED TO BE A TRUE AND CORRECT COPY OF THE ORIGINAL MAP RECORDED IN BOOK \_\_\_\_\_ PAGE \_\_\_\_\_ DATE: \_\_\_\_\_ JUDITH A. GIBSON, REGISTER OF DEEDS BY: \_\_\_\_\_ DEPUTY

State of North Carolina, County of Mecklenburg  
The following certificate(s) of Edward L. Killough a Notary Public (s) (are) certified to be correct.  
This is the \_\_\_\_\_ day of November 1994  
Judith A. Gibson, Register of Deeds  
By: \_\_\_\_\_ Deputy

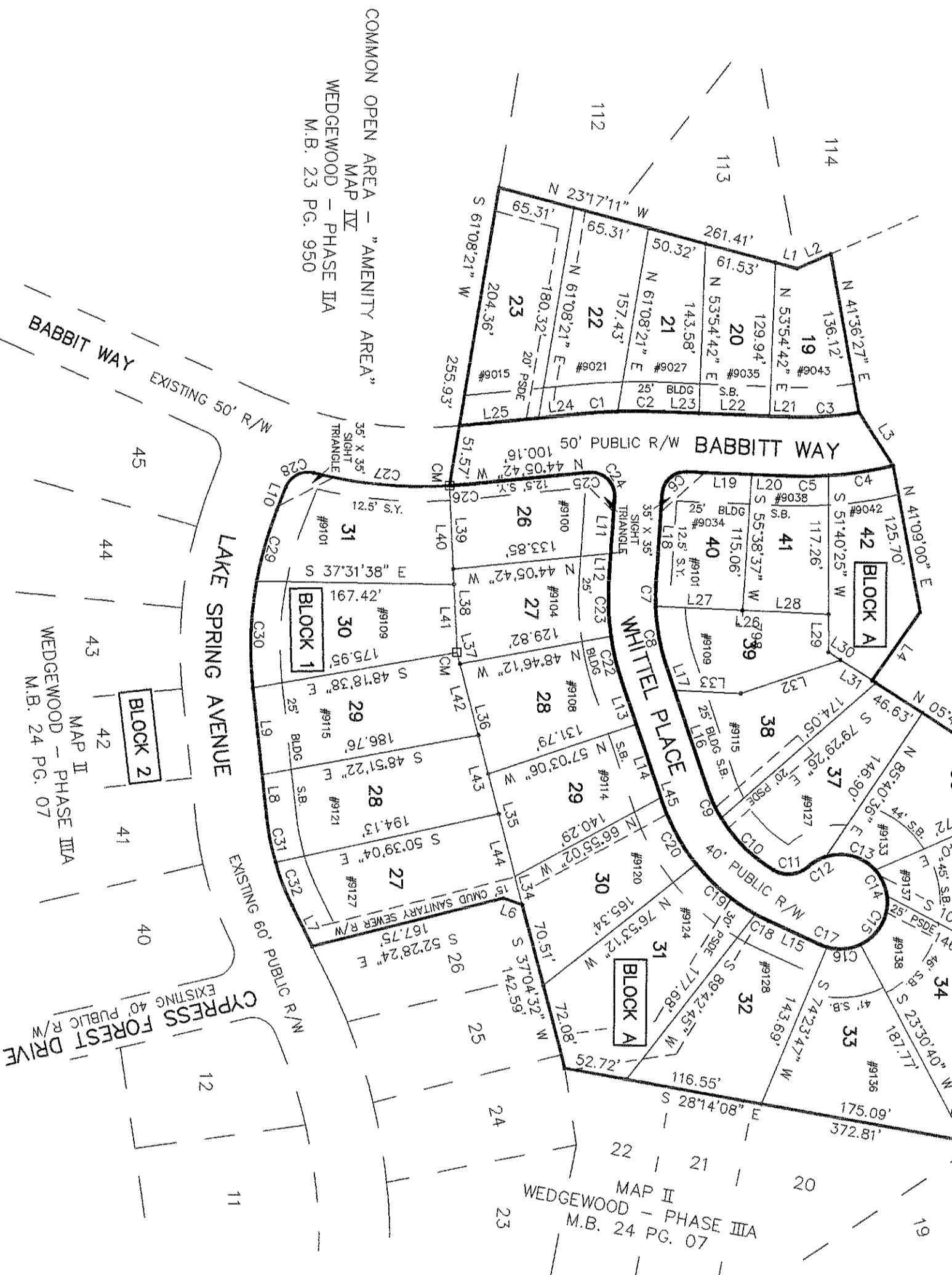
LOT	AREAS
19	8,054 Sq. Ft. 0.18 ACRE
20	8,205 Sq. Ft. 0.19 ACRE
21	8,855 Sq. Ft. 0.20 ACRE
22	10,952 Sq. Ft. 0.25 ACRE
23	12,502 Sq. Ft. 0.29 ACRE
24	9,370 Sq. Ft. 0.22 ACRE
25	9,370 Sq. Ft. 0.22 ACRE
26	11,210 Sq. Ft. 0.26 ACRE
29	10,384 Sq. Ft. 0.24 ACRE
30	11,539 Sq. Ft. 0.27 ACRE
31	16,126 Sq. Ft. 0.37 ACRE
32	13,919 Sq. Ft. 0.32 ACRE
33	14,667 Sq. Ft. 0.34 ACRE
34	16,775 Sq. Ft. 0.38 ACRE
35	15,575 Sq. Ft. 0.36 ACRE
36	12,156 Sq. Ft. 0.28 ACRE
37	10,368 Sq. Ft. 0.24 ACRE
38	8,868 Sq. Ft. 0.20 ACRE
39	7,946 Sq. Ft. 0.18 ACRE
40	7,946 Sq. Ft. 0.18 ACRE
41	10,799 Sq. Ft. 0.25 ACRE
42	13,869 Sq. Ft. 0.32 ACRE
28/1	13,760 Sq. Ft. 0.32 ACRE
28/2	13,196 Sq. Ft. 0.30 ACRE
29/1	13,171 Sq. Ft. 0.29 ACRE
29/2	13,145 Sq. Ft. 0.30 ACRE

APPROVED IN ACCORDANCE WITH THE ENGINEERING REQUIREMENTS OF THE SUBDIVISION REQUIREMENTS OF MECKLENBURG COUNTY, NORTH CAROLINA.  
MECKLENBURG COUNTY ENGINEERING DEPARTMENT  
ENGINEER: [Signature]  
DATE: 12/21/94

DEPARTMENT OF TRANSPORTATION  
DIVISION OF HIGHWAYS  
PROPOSED SUBDIVISION ROAD  
CONSTRUCTION STANDARDS CERTIFICATION  
APPROVED: [Signature]  
DATE: 12/20/94

APPROVED IN ACCORDANCE WITH THE PROVISIONS OF THE SUBDIVISION REQUIREMENTS OF MECKLENBURG COUNTY, NORTH CAROLINA.  
MECKLENBURG COUNTY PLANNING COMMISSION  
PLANNING COMMISSION: [Signature]  
DATE: 12/21/94

**DEDICATION OF COMMON OPEN SPACE**  
FIRST COLONY GROUP, LTD., IN RECORDING THIS PLAT AS A PORTION OF WEDGEWOOD (PHASE II) HAS DESIGNATED CERTAIN PARTS AS "COMMON OPEN SPACE" FOR THE USE BY THE HOMEOWNERS OR TENANTS OF WEDGEWOOD, NOT FOR USE BY THE GENERAL PUBLIC BUT FOR PARKING, RECREATIONAL, AND OTHER RELATED ACTIVITIES AS MORE FULLY PROVIDED FOR THE DECLARATION OF DEEDS IN BOOK 6247 PAGE 0250 ON THE MECKLENBURG COUNTY REGISTER OF DEEDS. THIS DECLARATION IS HEREBY MADE A PART OF THIS PLAT AND INCORPORATED HEREIN.



I, EDWARD L. KILLOUGH, certify that this plat was drawn under my supervision from an actual survey made under my supervision and that the boundaries and bearings and distances shown on the plat are true and correct as calculated by me or under my supervision and that the ratio of precision with G.S. 47-30 as amended, that this plat was prepared in accordance with registration number, and seal this 21st day of November, A.D., 1994.

North Carolina, Union County  
I, a Notary Public of the County and State aforesaid, certify that Edward L. Killough a registered Notary Public personally appeared before me this day and acknowledged the execution of the foregoing instrument. Witness my hand and official stamp or seal, this 21st day of November, 1994.

